

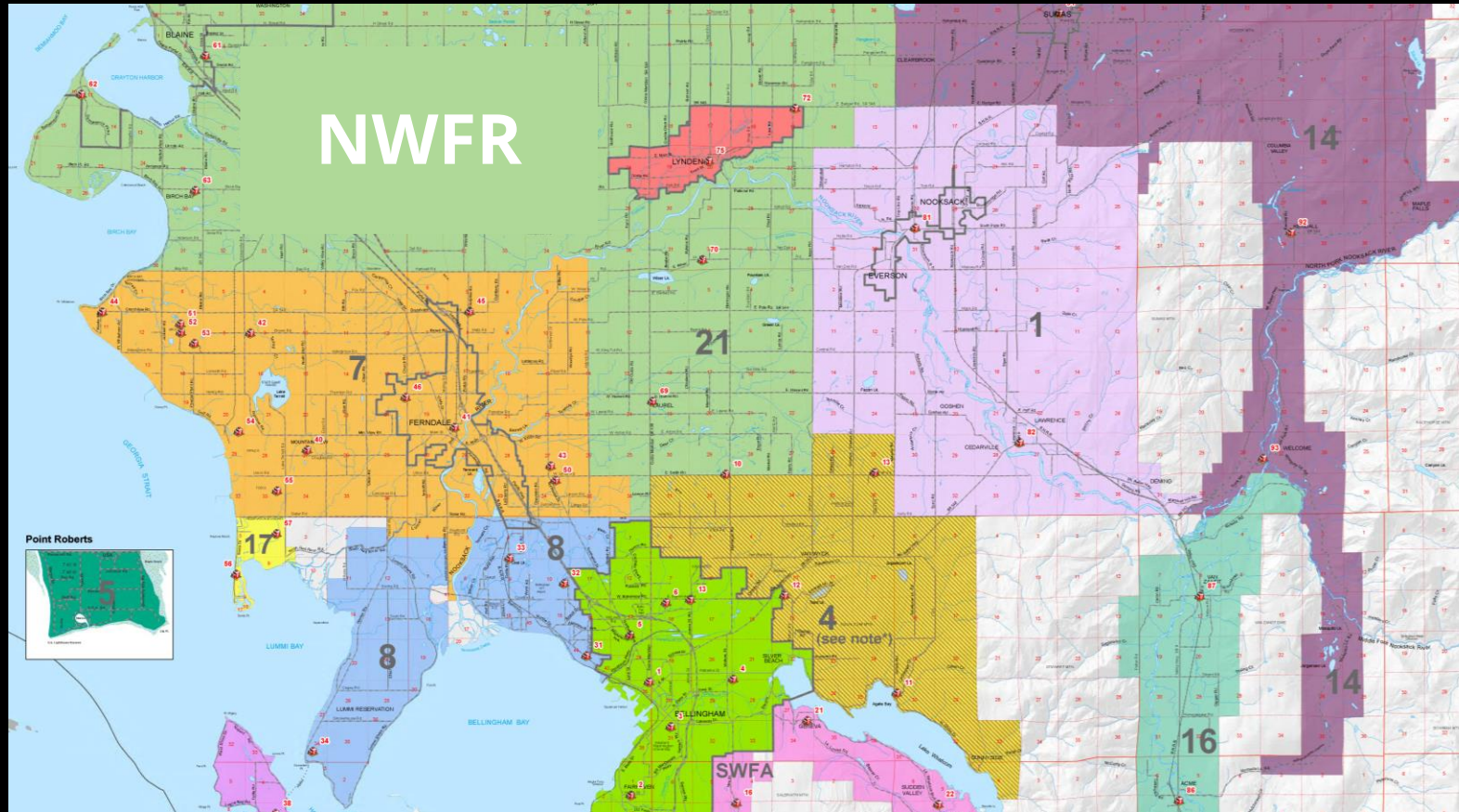


North Whatcom Fire & Rescue

A photograph of two firefighters from North Whatcom Fire & Rescue. They are both wearing dark blue t-shirts with a red and white Maltese cross patch on the left chest. The patch contains the words "FIRE", "NORTH WHATCOM", and "RESCUE". The firefighter on the left is a young man with short dark hair, smiling. The firefighter on the right is an older man with short grey hair and glasses, also smiling. A vertical yellow line is positioned between them. The background is slightly blurred, showing green foliage and a red fire truck.

Who we are

North Whatcom Fire & Rescue
provides fire and life safety services to
33,800 people over **156 miles**



We serve the communities of Lynden, Blaine, Custer, Laurel, Birch Bay and Semiahmoo.

We also serve residents of Whatcom County Fire District 4 through a contract agreement.

What we do

We protect lives and property through

- Fire suppression
- Emergency medical services
- Fire prevention
- Public education



Call Volumes

In 2024, the fire district responded to

 **5,992**

emergency responses

 **4209**

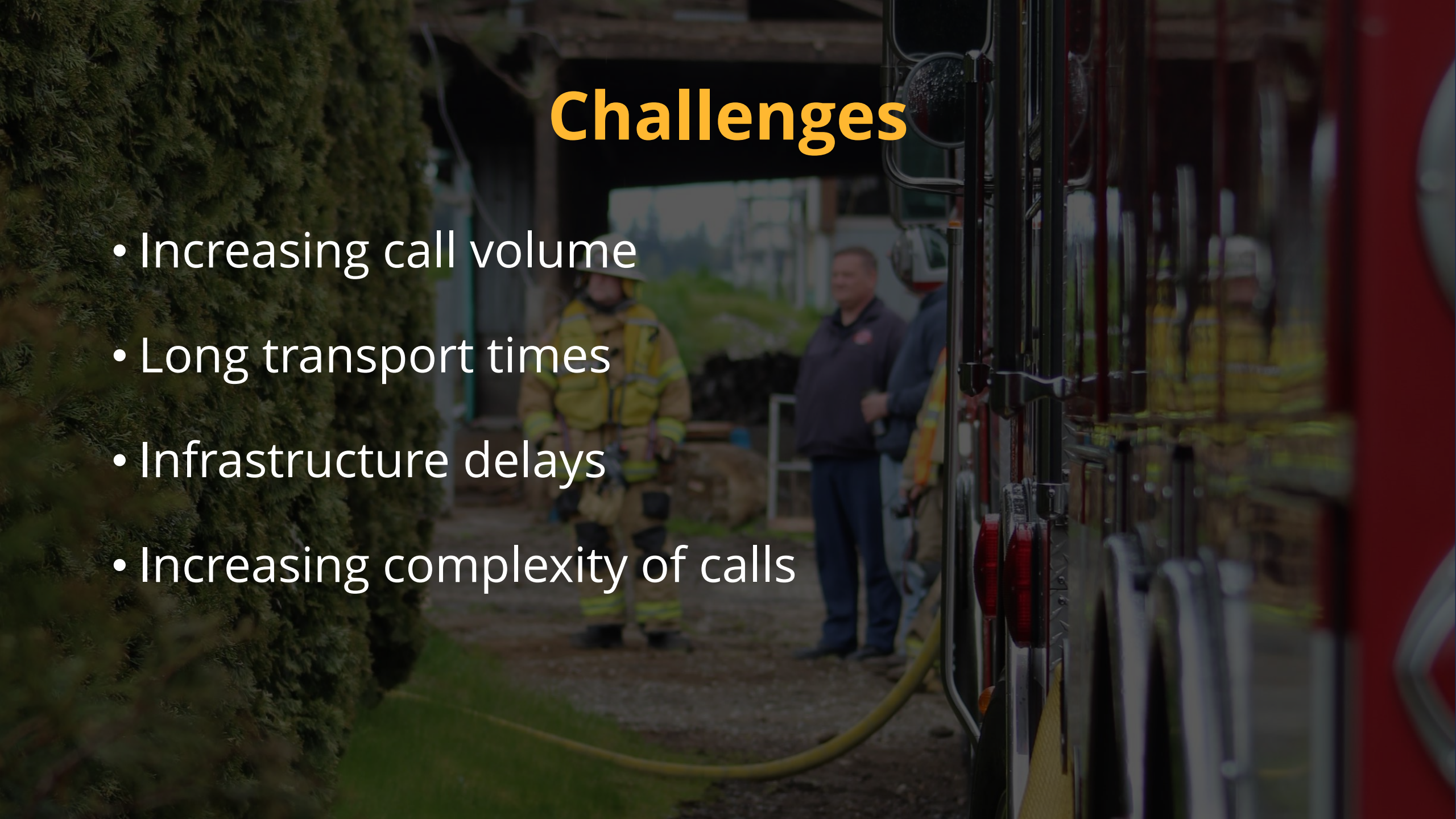
were medical emergencies

 **2320**

were overlapping calls
(multiple emergencies at once)

Challenges

- Increasing call volume
- Long transport times
- Infrastructure delays
- Increasing complexity of calls



Challenges

- Unable to keep pace with growth
- Aging facilities and vehicles
- Unfunded mandates
- Employee retention

Post-Incorporation Fire Service Options

- Upon incorporation, the new city is temporarily annexed into the fire district until the end of the calendar year.
- The temporary annexation can be extended for another year upon agreement by the fire district and city.
- The city can then decide to join the fire district permanently by asking the voters to approve it by a ballot measure.

Questions?

Jason Van der Veen
Fire Chief

jvanderveen@nwfrs.com
360-318-9933

Learn more at
www.nwfrs.net